



ECP-2008-DILI-528001

EuropeanaConnect

D4.4.1 (D4.2.1) – Licence Selection Tool

Deliverable number/name	<i>D4.4.1</i>
Dissemination level	<i>PU</i>
Delivery date	<i>August 16th 2011</i>
Status	<i>v.1.1</i>
Author(s)	<i>Maarten Zeinstra (Kennisland)</i>



eContentplus

This project is funded under the eContentplus programme, a multiannual Community programme to make digital content in Europe more accessible, usable and exploitable.



Österreichische
Nationalbibliothek

EuropeanaConnect is coordinated by the Austrian National Library



D4.4.1 (D4.2.1) – Licence Selection Tool v1.1

Reference Implementation Documentation

This deliverable is software.

This is an updated version (v1.1) of D4.2.1 and submitted as D4.4.1.

Reason: The licence selection tool beta stand-alone tool as it can be found on its test server and EuropeanaLabs is a proof of concept of simple and insightful licence selection for Europeana objects. This reference implementation describes what is needed to integrate this tool within the Europeana ingestion process. Europeana Office and EuropeanaConnect WP4 decided that this tool will not reach a production version in a stand-alone format, but will be integrated with the SIP Creator that is under development at the Europeana Office. Europeana Office and WP4 will work together into fitting this project within the SIP Creator.



co-funded by the European Union

The project is co-funded by the European Union, through the **eContentplus** programme

<http://ec.europa.eu/econtentplus>

Description of software developed for Europeana within EuropeanaConnect

The Licence Selection Tool helps data providers and data aggregators to choose between the different rights statements that need to be selected per element or dataset. For further information about the different licences see the Europeana Semantic Element Specification (ESE version 3.2.3 onwards), particularly the europeana:rights field. This document describes the reference implementation for a user interface for that rights field. For the purpose of the reference implementation a link to the source code is given below. Screenshots have been replaced by schematic overviews of the possible choices and how to determine the rights status of a work.

Software Information	
Link to software	http://europeanalabs.eu/browser/contrib/license-selection-tool
Login information	NA
Development environment	Eclipse / Google Web Tools
Programming language used	JAVA / Google Web Tools (client side only)
Application server used	NA
Database requirements	No database connection required
Operating system requirements	Web based cross platform
Port requirements / default ports used	No special settings needed
Interface	Web service
Licensing conditions	GNU GPL licence v.2.0 / EUPL v.1.1

Note: In the URL of the software, the noun “licence” is spelled in US-english (“license”), however throughout the deliverable, UK-english spelling is used.

Reference Implementation

The licence selection tool beta stand-alone tool as it can be found on its test server and EuropeanaLabs is a proof of concept of simple and insightful licence selection for Europeana objects. This reference implementation describes what is needed to integrate this tool within the Europeana ingestion process. Europeana Office and EuropeanaConnect WP4 decided that this tool will not reach a production version in a stand-alone format, but will be integrated with the SIP Creator that is under development at Europeana Office. Europeana Office and WP4 will work together into fitting this project within the SIP Creator.

Summary of requirements

The Licence Selection tool needs to assist data providers to mark up the mandatory field of ESE¹/EDM² europeana:rights. Each object/record needs to communicate the right statements that hold the copyright status of the work that is to be ingested in Europeana.

Two distinct types of statements are allowed in this field: Europeana Right Statements and Creative Commons Licences. The format of these statements is always a URI to the location where details of these statements are located. This can be depicted graphically in the following manner.

¹ See also <http://www.europeana.eu/schemas/ese/ESE-V3.3.xsd> or contact Antoine Isaac for further specifications on this subject.

² EDM will replace ESE in later versions of metadata structuring. See http://group.europeana.eu/c/document_library/get_file?uuid=718a3828-6468-4e94-a9e7-7945c55eec65&groupId=10605

Europeana Rights Framework

Always uses the content of Europeana:rights

```
<europeana:rights>
  http://www.europeana.eu/rights/...
</europeana:rights>
```

```
<europeana:rights>
  http://www.creativecommons.org/...
</europeana:rights>
```



Possible Licenses:

1. pd
2. rr-f
3. rr-r
4. rr-p
5. unknown



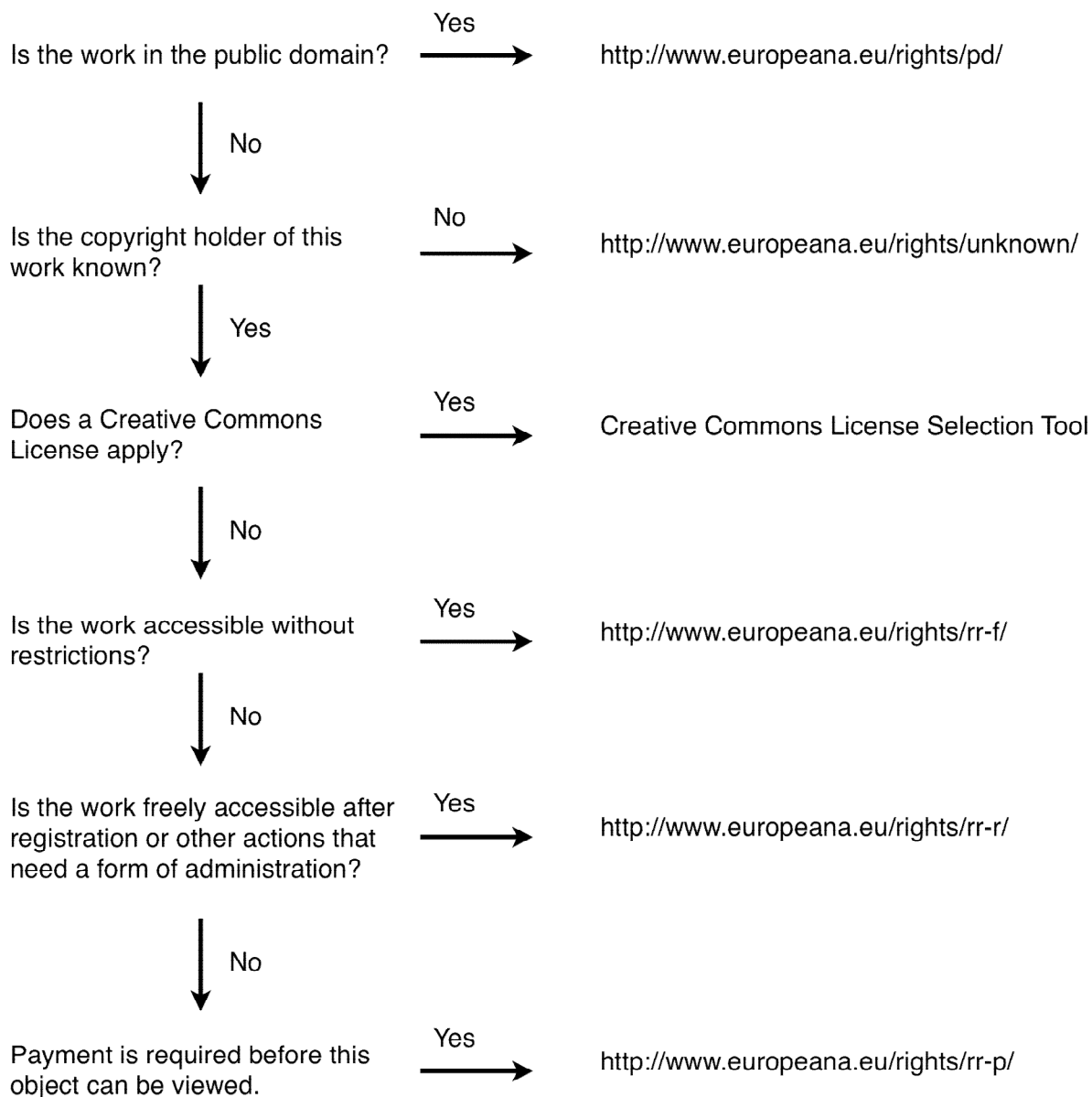
Possible Licenses:

1. licenses/by
2. licenses/by-sa
3. licenses/by-nc
4. licenses/by-nd
5. licenses/by-nc-sa
6. licenses/by-nc-nd
7. publicdomain/cc0

Each Creative Commons licence can be a ported version of a specific jurisdiction and language and can also have different versions. In all over 500 possible creative commons licences can be specified, but these all are versions of the 7 mentioned above. All should be allowable as valid data of this field.

Europeana Right Statements, the left branch of the graph, cover all licences that are not Creative Commons Licences. These are blanket statements for rights reserved works(rr-f, rr-r, rr-p), public domain works(pd), and orphaned works(unknown). Rights Reserved works statement fall apart according to the access an end-user of Europeana has (Free Access [rr-f], Restricted Access [rr-r], Paid Access [rr-p]).

A graphical decision making process has been developed as a guideline for the development of this tool:



This chart does not include the process of selecting a Creative Commons licence³. Creative Commons has an API and a (software) library that can be implemented here. Also if Creative Commons Licences are used as right statement then it is mostly not needed to go into the licence selection tool of Creative Commons as in those cases it would be rather more a case of provider policy to apply those licences. The tool will include this library and enable the user to select a Creative Commons licence and the cc0 statement.

The first question of this flowchart is very complex that depends on many factors. To help answer this question WP4 of EuropeanaConnect is also developing a Public Domain Helper tool that can determine with some certainty if a work is in the public domain in the country of the data provider. This tool will be referenced at that step and will be publicly available as a stand-alone tool. See

³ Creative Commons' own license selection tool can be found at <http://www.creativecommons.org/choose/>

D4.2.2 – Europeana Public Domain Helper Tool, stand-alone reference implementation and implementation guidelines (online reference) for a reference guide of that tool.

To summarize the requirements of the licence selection tool: it needs to be able to validate and help data providers to select a licence/right statement using the restrictions that are stated above.

Input and Output of Licence Selection Tool

Each record needs to have a `europena:rights` field, this needs to be mapped or statically added to each record. Data providers need to be able to select from all available licences. Input of this tool is solely the providers input and choices.

The output of the tool will be an URI that points to a Europeana Rights Page or a Creative Commons licence page. This output will be added to the ESE/EDM structured document that will be used in the ingestion process. All valid outputs are checked using the ESE 3.3 documentation⁴.

Practical: Including the licence selection tool in the SIP Creator

There are some differences between the stand-alone beta tool and the Europeana SIP Creator. Both are written in Java, although the beta tool uses the GWT platform and the SIP Creator uses Java to create a desktop application. This difference means that the licence selection tool will be rewritten for inclusion in the SIP Creator.

This software will need to be as modular as possible to be easily swapped with newer license selection tools in case of newer versions of the licensing framework of Europeana. This concern has been identified by the developers of this tool and is considered an architectural issue that is being addressed in implementing this tool in the SIP Creator.

There is also a difference in scope, where the Licence Selection Tool has a focus on selection of a licence on a *per work* basis, the SIP Creator has a *per set* scope. This will entail that the developers need to rethink how this can best be matched. One possible solution is to mark up ‘Groovy’⁵ examples of automatic mapping based on information that is already available in the metadata of the data provider. Another would be to encourage data providers to make different sets based on the copyright status of the work that is to be included in Europeana.

These practical implications mean that the beta tool that was developed by WP4 has done its job in researching and designing the structure of a license selection tool. The product in its current form will not be further developed, a new license selection tool that uses the reference implementation will be built by the developers of the SIP Creator in close collaboration with WP4, under D4.4. This work is already in an advanced stage of development at the time this document was written⁶.

⁴ <http://www.europeana.eu/schemas/ese/ESE-V3.3.xsd>

⁵ A Java programming language derivative, which enables the SIP Creator to be more flexible.

⁶ See the work done on the SIP Creator on EuropeanaLabs.